



RETOUCH NEXUS

REsilienT water gOvernance Under climate Change
within the WEF E NEXUS

Deliverable D5.2

WEBSITE AND VISUAL IDENTITY

Clémence GRACIA, Barthélémy MAILLARD and Solène FOVELLE (Euroquality)

Date (21/06/2023)



Funded by the European Union. Views and opinions expressed are however those of the author(s) only and do not necessarily reflect those of the European Union or REA. Neither the European Union nor the granting authority can be held responsible for them.

RETOUCH NEXUS Partners



Technical University of Munich - TUM (Germany) - Maria Vrachioli, Johannes Sauer, Markus Disse, Juan Pablo Henao Henao, Jingshui Huang & Nicole Tatjana Scherer

Valencia Polytechnic University - UPV (Spain) - Manuel Pulido-Velazquez, Hector Macián Sorribes, Adria Rubio-Martin & Eulalia Gomez Martin

Vrije Universiteit Amsterdam - VUA (Netherlands) - Erik Ansink, Nicolien van der Grijp, Daniel Petrovics & Leon Bremer

adelphi research gemeinnutzige - adelphi (Germany) - Annika Krammer, Elsa Semmling, Karolina Heck & Binayak Das

Slovak University of Agriculture - SUA (Slovakia) - Jan Pokrivcak, Ema Lazorcakova & Miroslava Rajcaniova

Euroquality - EQY (France) - Barthélémy Maillard, Clémence Gracia & Solène Fovelle

Vlaamse Instelling voor Technologisch Onderzoek - VITO (Belgium) - Katrien Van Hooydonk, Lilian Taverner, Steven Broekx & Wim Schiettecatte

De Watergroep - DWG (Belgium) - Pauline Ottoy, Charlotte Jacobs & Ian Montauban Van Swijndregt

Energy and Water Agency - EWA (Malta) - Manuel Sapiano, Nicholas Ellul, Nadine Vella, Aaron Cutajar, Nadia Gatt Gafa & Marco Graziani

Hoogheemraadschap Hollands Noorderkwartier - HHNK (Netherlands) - Floor van Schie, Ronald Koolen & Marja Korting

Greening the Islands - GtI (Italy) - Gianni Chianetta, Emilio Gabrielli, Francesco Luise, Mattia Monaco, Andrea Morabito, Sabrina Pentecoste, Jean Karl Micallef-Grimaud, Graziana Salvati

Regierung Oberfranken - RegOb (associated) (Germany) - Andrea Kuenzl

Ministry of Agriculture and Rural Development - MARD (associated) (Slovakia) - Martin Kovac



DELIVERABLE 5.2

Project Acronym	RETOUCH NEXUS
Project Title	REsilienT water gOvernance Under climate CHange within the WEFE NEXUS
Project Coordinator	Maria Vrachioli
Project Duration	01.01.2023 – 31.12.2026

Nature of the deliverable		
R	Document, report (excluding the periodic and final reports)	
DEM	Demonstrator, pilot, prototype, plan designs	X
DEC	Websites, patents filing, press & media actions, videos, etc.	
OTHER	Software, technical diagram, etc.	

Dissemination Level		
PU	Public, fully open, e.g., web	X
CO	Confidential, restricted under conditions set out in Model Grant Agreement	
CI	Classified, information as referred to in Commission Decision 2001/844/EC	

Deliverable No.	D5.2
Dissemination level ¹	PU - Public
Work Package	WP5 - Communication, dissemination, and exploitation
Task	T5.2 - Outreach and communication for general audience
Lead beneficiary	6 - EQY
Contributing beneficiary(ies)	All partners
Due date of deliverable	30 June 2023
Actual submission date	29 June 2023

Quality procedure			
Date	Version	Reviewers	Comments
10.05.2023	Draft	Solène Fovelle & Clémence Gracia	
20.06.2023	Revision	Maria Vrachioli	
21.06.2023	Final version	Solène Fovelle & Clémence Gracia	

Acknowledgements

This report is part of the 25 deliverables from the project "RETOUCH NEXUS" which has received funding from the European Union's Horizon Europe research and innovation program under grant agreement N° 101086522. More information on the project can be found at www.retouch-nexus.eu



Funded by the European Union. Views and opinions expressed are however those of the author(s) only and do not necessarily reflect those of the European Union or REA. Neither the European Union nor the granting authority can be held responsible for them.



Executive summary

The deliverable 5.2 ‘Website and visual identity’ has been developed in the context of the RETOUCH NEXUS Work Package 5. It aims to i) ensure a wider communication and dissemination of the project activities, in order to reach the greatest possible audience; ii) promote Project Results across external stakeholders and the general audience and iii) to maximise its impacts and visibility across Europe and beyond on communication and dissemination activities.

The purpose of this document is to present the project website and visual identity.

The website is a living tool that evolves during the lifespan of the project; it will be fed, improved and updated periodically.

Table of content

Contents

Executive summary	4
Introduction	5
1. Website architecture	5
1.1. Home page	5
1.2. The project	9
1.3. Case studies	10
1.4. The project partners	13
1.5. About WEFN Nexus.....	15
1.6. Glossary.....	16
1.7. Library	18
1.8. News and events.....	18
1.9. Contact us	21
2. Visual identity	21
2.1. Graphic charter	21
2.2. Word template.....	27
2.3. PPT template.....	35
2.4. Case studies poster template	39
Conclusion	41



Introduction

The RETOUCH NEXUS dedicated website aims to present the project's objectives, methodology and main results to the general public, as well as serve as a contact point between the project's partners and the general audience via its links to social media accounts, possibility to contact the project's team via a "Contact us" form and to be connected to each partner's specific website. The project website is available since May 9, 2023: <https://retouch-nexus.eu/>. The project's visual identity describes all the visual elements that constitute the RETOUCH NEXUS project and sets out the rules to apply on all communication material. The purpose of this graphic charter is to give the RETOUCH NEXUS project a consistent and uniform image. This charter must be followed whenever RETOUCH NEXUS partners, external partners, subcontractors or stakeholders communicate or produce communication materials on behalf of the project.

FOR QUESTIONS REGARDING THE USE OF THIS CHARTER OR REQUESTS FOR FILES, PLEASE CONTACT:

- Solène Fovelle: solene.fovelle@euroquality.fr
- Clémence Gracia: clemence.gracia@euroquality.fr

1. Website architecture

The structure of the RETOUCH NEXUS website has been organised to provide user with a clear path to discover the project in all its aspects and on different levels of complexity and details provided, from a general presentation to specific objectives and impacts, activities organization etc. The website follows the structure presented below:

- [Homepage](#)
- [About the project](#)
- [Case studies](#)
- [The project partners](#)
- [About WEFE Nexus](#)
- [Glossary](#)
- [Library](#)
- [News and Events](#)
- [Contact us](#)

Details on the information included in each page will be presented in the following sections of this report.

1.1. Home page

The Homepage is the core of the website. It aims to present the project's key information to provide visitors with a clear, general idea of the RETOUCH NEXUS project and its goal. In addition, to promote communication and dissemination activities, the homepage, as well as the top menu, include the links to the project's social media accounts. The main sections of the website's homepage are:



Funded by the European Union. Views and opinions expressed are however those of the author(s) only and do not necessarily reflect those of the European Union or REA. Neither the European Union nor the granting authority can be held responsible for them.



- Project short presentation
- Project general concept and objectives
- Latest news & results section
- Map of the case studies
- Picture of the consortium + partners logos slideshow (with direct links to each partner's official website)
- Contact us section (link to social media accounts, Contact us form)
- Footer (including the EU flag, project funding disclaimer and a "Newsletter subscription" section)



Funded by the European Union. Views and opinions expressed are however those of the author(s) only and do not necessarily reflect those of the European Union or REA. Neither the European Union nor the granting authority can be held responsible for them.



RETOUCH NEXUS

REsilienT water gOvernance Under climate CHange within the WEFE NEXUS

Working towards a secure water future

Discover our project

Welcome to RETOUCH NEXUS' website

RETOUCH NEXUS is a **48-month** HORIZON EUROPE Research and Innovation project funded by the European Union starting in January **2023** and ending in December **2026**. The project aims at introducing and promoting the Water-Energy-Food-Ecosystems (WEFE) Nexus as a multi-level and cross-sectoral approach that supports the EU water economy and relies on ecological and social considerations.

Who we are | What we do

Enabling environment for participation

Financial, economic and commercial instruments to determine the value, price and cost of water

Design sustainability & flexibility cross-sectoral water systems

Support reasonable and desirable governance practices and institutional settings

Nexus-smart water governance practices and settings

Monitor water governance to providing a set of indicators

Knowledge base for robust monitoring

Multi-level, multi-actor and cross-sectoral governance scheme

Learn more

Latest news & results

19 June 2023
Online Launch
19 June 2023
9:00 to 18:00 (CET)
Registration form

23-28 April 2023
RETOUCH NEXUS
Get to know the RETOUCH NEXUS project at the
EGU General Assembly 2023

19-20 April 2023
CLIMATE RISK, VULNERABILITY AND RESILIENCE BUILDING
19-21 APRIL 2023
Lyon, France

17 April 2023
SEMINARIO INTERNO
REDES DE COLABORACIÓN
Understanding Interactions and Synergies between Water, Energy, Food and Ecosystems, Health and Digitalisation in the Circular Economy

22 March 2023
TODAY I AM DOING SOMETHING

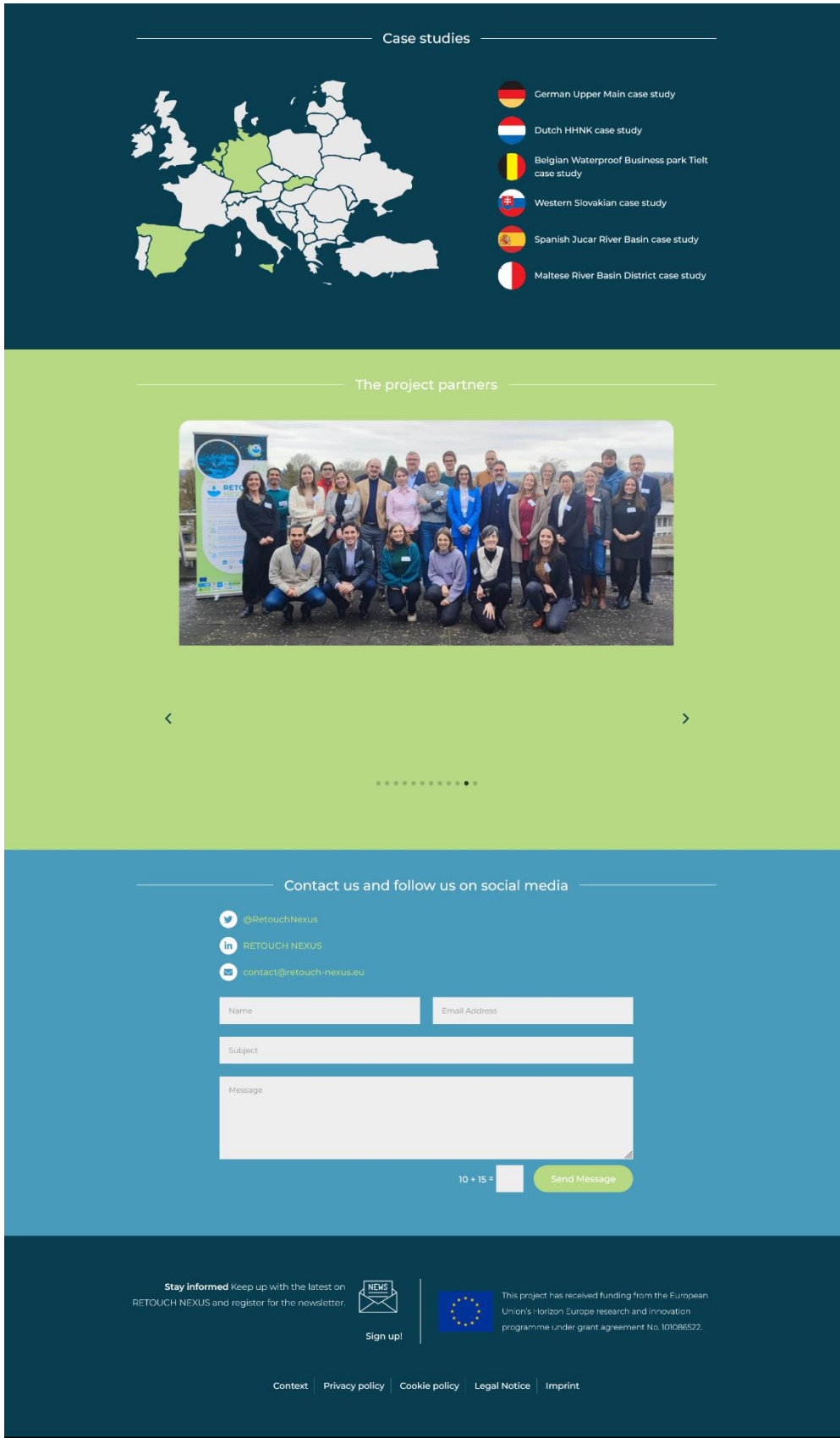
6 February 2023

Read All News



Funded by the European Union. Views and opinions expressed are however those of the author(s) only and do not necessarily reflect those of the European Union or REA. Neither the European Union nor the granting authority can be held responsible for them.





Funded by the European Union. Views and opinions expressed are however those of the author(s) only and do not necessarily reflect those of the European Union or REA. Neither the European Union nor the granting authority can be held responsible for them.



1.2. The project

“The project” section of the website provides more details on the project’s organisation, impacts and methodology with an increasing level of details provided. This page includes:

- The project context
- Objective and approach
- Results and expected outcomes

About RETOUCH NEXUS

Navigation: About - Case studies - Library - News & Events - Contact

Context

Implementing the 2030 Agenda for UN Sustainable Development requires an improved understanding of the **interdependencies among the Sustainable Development Goals (SDGs)** and the design of coherent water governance practices and policies across different levels and sectors.

Numerous approaches and practices exist to govern sustainably water. It is, however, **unclear, which of these approaches have proven to be effective** in maintaining socio-economic advancement and/or restoring environmentally sustainable water resources in a cross-sectoral setting.

The **Water-Energy-Food-Ecosystems (WEFE) Nexus has emerged** over the past decade as a **promising concept** to optimise trade-offs and increase synergies in promoting goals of sustainable and resilient water.

RETOUCH Nexus will contribute to generating both **conceptual advances** and **robust empirical evidence** on **monitoring and evaluating existing governance schemes and practices** at the EU level using the Nexus approach.

8 European countries	3 M€ EU funds	5 innovative dimensions	48 months	6 governance schemes	13 partners	35 governance metrics	6 case studies
-------------------------	------------------	----------------------------	--------------	-------------------------	----------------	--------------------------	-------------------

Objective and approach

Increased water scarcity caused by anthropocentric and natural causes demands an integrated approach in water governance to efficiently allocate water resources to various competing uses.

Building upon the Water-Energy-Food-Ecosystems (WEFE) Nexus, RETOUCH NEXUS aims to design and advance **integrated, innovative, and inclusive Nexus-smart water governance schemes and institutional settings** aiming at a **secure water future in the EU, resilient to climate change**.

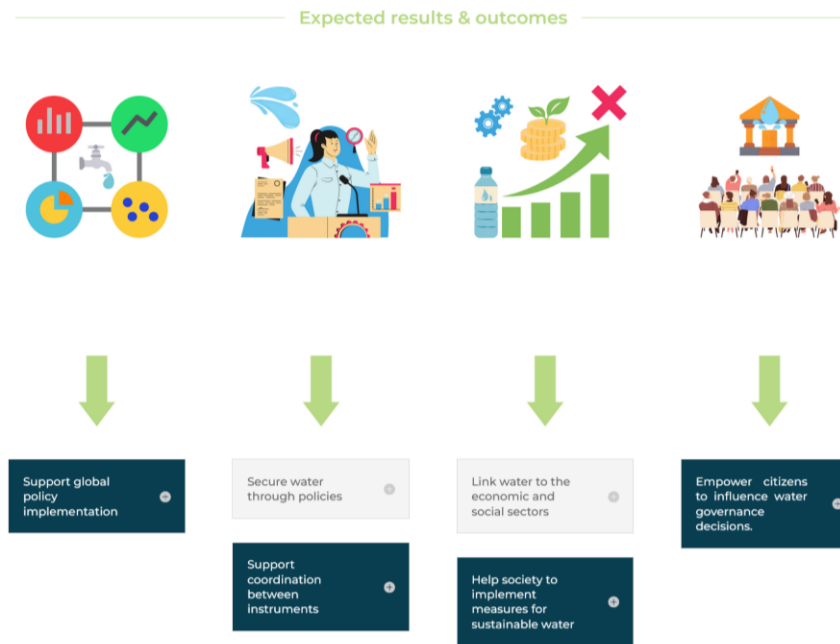
Following an evidence-based approach, RETOUCH NEXUS will propose, assess and optimise Nexus-smart methods addressing 5 innovative dimensions of water governance using the WEFE Nexus approach:

				
Monitor water governance by providing a set of Nexus-smart indicators that reflect multi-actor and cross-sectoral interactions	Present and advocate more integrated, Nexus-based, climate-resilient water governance systems.	Design economically and financially sustainable cross-sectoral, multi-level Nexus-based water systems	Promote and implement more transparent and inclusive water governance through innovative engagement mechanisms	Endorse upscalable and desirable Nexus-based water governance practices and institutional settings



Funded by the European Union. Views and opinions expressed are however those of the author(s) only and do not necessarily reflect those of the European Union or REA. Neither the European Union nor the granting authority can be held responsible for them.





1.3. Case studies

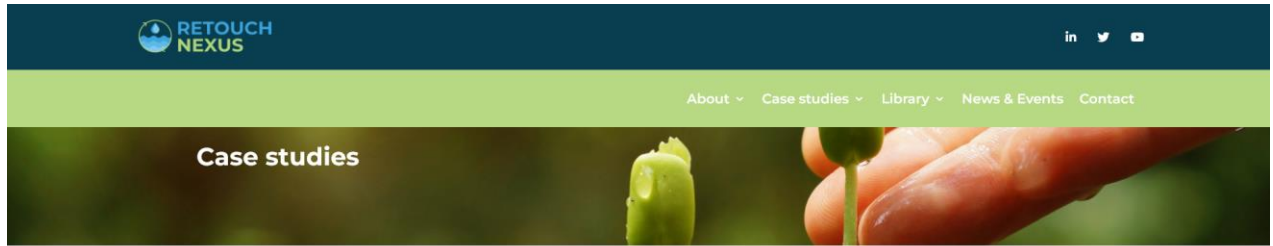
The Case studies page is dedicated to presenting the six case study areas. The page includes:

- Definition of a “case study”
- Links to each case studies detailed presentations
- Map of the case studies
- Case studies selection



Funded by the European Union. Views and opinions expressed are however those of the author(s) only and do not necessarily reflect those of the European Union or REA. Neither the European Union nor the granting authority can be held responsible for them.

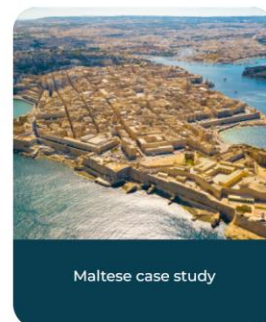
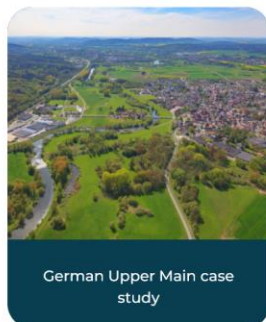
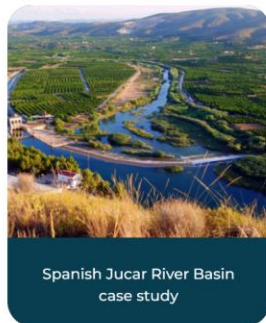




Definition

In the RETOUCH Nexus project, a case study is interpreted as a **micro-level WEFE Nexus representation** that offers the appropriate context of a stylized water economy, where integrated and climate-resilient water governance schemes and innovative engagement mechanisms can be appraised.

All case studies



Funded by the European Union. Views and opinions expressed are however those of the author(s) only and do not necessarily reflect those of the European Union or REA. Neither the European Union nor the granting authority can be held responsible for them.





Case studies selection

The six RETOUCH Nexus case studies have been carefully selected according to the following criteria:

- **Governance schemes and practices:** WEFE nexus, watershed management, circular economy applied to water/ water circular economy approaches;
- **Sectors addressed:** water, energy, food, ecosystems;
- **Dimensions considered:** social, economic, environmental;
- **Policies appraised:** water, food, land use, agriculture, urban planning;
- **Stakeholders engaged:** e.g., water utilities, regulators, water users, solution providers, civil society (women and youth);
- **Measures and solutions covered:** a combination of technological, economic, political, social solutions;
- **Water problems tackled:** e.g., water quantity, water quality, pollution, biodiversity, competing demands;
- **Climate change risks covered:** e.g., drought, flood, extreme events;
- **Water basins considered:** trans-boundary, local, regional, island.

Role in the project

- The case study sites of the RETOUCH Nexus cover different levels of application that enable analysing the direct and indirect impacts of water governance schemes and policy interventions on sectors of the economy.
- The application context of the RETOUCH Nexus case studies ranges from the business park and local to regional and national levels. RETOUCH Nexus focuses on the "macro-micro linkage" framework that facilitates the assessment of various water practices and policies and their impacts within individual water-using sectors and the entire economy at any geographical level.
- The case studies will play a key role in the second work package (WP) on stakeholder engagement, WP3 (economic, financial and business models), WP4 (water governance schemes and institutional settings) and WP5 (dissemination and upscaling) represented by the case study leaders and their associated partners.
- All together, they represent the diversity of water challenges faced in Europe – facilitating the development of a product that can be easily replicable in other basins in Europe – but also beyond Europe (as other regions do face similar challenges).

Stay informed Keep up with the latest on RETOUCH NEXUS and register for the newsletter.



Sign up!



This project has received funding from the European Union's Horizon Europe research and innovation programme under grant agreement No. 101086522.

[Context](#) | [Privacy policy](#) | [Cookie policy](#) | [Legal Notice](#) | [Imprint](#)



Funded by the European Union. Views and opinions expressed are however those of the author(s) only and do not necessarily reflect those of the European Union or REA. Neither the European Union nor the granting authority can be held responsible for them.



1.4. The project partners

The “Project partners” page is the space on the website dedicated to presenting the members of the Consortium, their role in the project, and give users the possibility of connecting directly with them via their official websites.

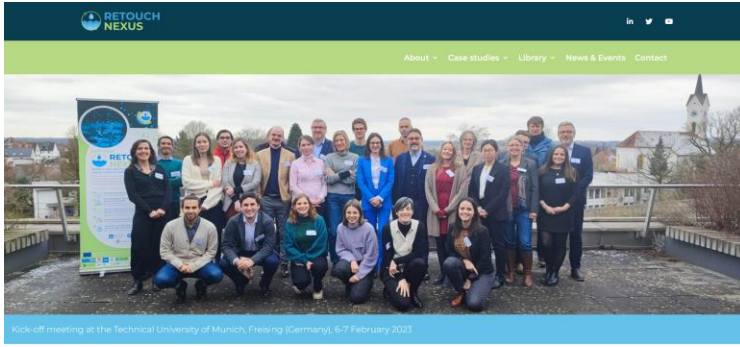
This page includes:

- A general introduction of the consortium.
- One-by-one descriptions of each partner: general description of the organisation, role in the RETOUCH NEXUS project and link to their official website.
- In addition, all logos are linked to the partners’ official websites, so that the user can click on them and be automatically redirected.



Funded by the European Union. Views and opinions expressed are however those of the author(s) only and do not necessarily reflect those of the European Union or REA. Neither the European Union nor the granting authority can be held responsible for them.





Who are we ?

To support the proliferation of water governance schemes and ensure their sustainable implementation addressing technical, economic, social, institutional and environmental dimensions, RETOUCH Nexus will adopt a **holistic approach integrating various disciplines and science areas**.

RETOUCH Nexus brings together a consortium of experts and practitioners with various experiences in **the field of engineering, social, political and economic sciences**, as well as diverse disciplinary and national backgrounds.

The interdisciplinary foundation of the project is enhanced by the participation of consortium partners that are **located and actively conduct research at the case study locations**. They have an extended network of local government agencies, SMEs and civil society who have been included formally in the consortium as affiliated or associated members.

The partners



Technical University of Munich (TUM)

Who are we ?

Founded in 1868, the Technical University of Munich (TUM) is one of Europe's top universities committed to excellence in interdisciplinary research, inclusive teaching and active promotion of young scientists. The university also forges strong links with companies and scientific institutions across the world. TUM is organized in 14 departments that provide an excellent environment for research and for the education of 49,000 students with a total budget of EUR 1,770 million euros. TUM is represented in this project through two groups: the group of Production and Resource Economics and the group of Hydrology and River Basin Management.

Maria Vrachlioli
Project coordinator
maria.vrachlioli@tum.de

Markus Disse

Jingshui Huang

Johannes SAUER

Juan Pablo Henao

Nicole T. Scherer

What is our role in the project ?

The TUM group of Production and Resource Economics is the project coordinator and leads the WPI activities that focus on the development of a robust monitoring framework of water governance. In addition, the group of Production and Resource Economics is leading WPE, associated with the management and coordination of the project's activities. The TUM group of Hydrology and River Basin Management is the German Case Study leader and with the support of Regierung Oberfranken are exploring the water governance challenges in the Upper Main region. While the Upper Main region offers a strong interconnection of all the WEFEE aspects, a regular stakeholder communication platform is missing. In addition, due to the hydrological extremes (floods and droughts), tensions among stakeholders are expected to increase. Therefore, there is an urgent need to map and overcome tensions among different water users, while ensuring environmental sustainability.



Valencia Polytechnic University (UPV)

Who are we ?

The Hydroeconomic Modelling Group at IIAIA-UPV is a multidisciplinary team of researchers led by professor Manuel Pulido-Velazquez focused on researching the economic valuation and improvement of water resources and environmental management, as well as the use of economic instruments to achieve sustainable use and management of water.

Adrià RUBIO MARTIN
Main contact
adrumar@upv.es

Manuel PULIDO-VELAZQUEZ

What is our role in the project ?

We are leading Work Package 3 "Economic and financial schemes of water systems". In the WP we will examine the use of various tools and methods, such as pricing policies, water markets, crop insurance, and payments for environmental services, to achieve sustainable use and management of water incorporating a WEFEE perspective.

Hector MACIAN-SORRIBES

We are also leading the Júcar River Basin case study, which is an excellent case study for performing hydroeconomic analysis under a WEFEE nexus lens due to the economic and environmental interdependency of its productive sectors, its complex water management system, and the vulnerability to future climate and global scenarios.

Eulalia GOMEZ MARTIN



Funded by the European Union. Views and opinions expressed are however those of the author(s) only and do not necessarily reflect those of the European Union or REA. Neither the European Union nor the granting authority can be held responsible for them.



1.5. About WEFE Nexus

A general presentation of the project concept, "WEFE Nexus", has been developed to help the general public better understand the project and all the dimensions it takes into account.



The word **NEXUS** refers to "a connection or series of connections linking two or more things" (Oxford Dictionary,2022). **Water, energy and food** are interconnected, comprising a system (the "nexus") characterized by complexity and interconnectedness that is further augmented by the indirect role of **ecosystem services**.




Uncertainties and concerns regarding the future security of water, energy, food and ecosystem services have drawn attention to the Water-Energy-Food-Ecosystems (WEFE) Nexus. **Actions in one Nexus system can affect the other systems and bring significant economic, environmental, and social consequences.** Additional challenges in cross-sectoral integration emerge through the appearance of silos, by diminishing the potential for synergies that promote resilient and effective water governance.

The WEFE Nexus recognizes these complex (spatial, temporal, institutional, jurisdictional) **inter-dependencies between water, energy, food and ecosystems resilience.** It presents an integrated and holistic approach to water governance and policy settings that can effectively respond to climate change.


The RETOUCH Nexus project has recognized the **need for this paradigm shift to more systematic, integrated and holistic water governance interventions** by adopting the WEFE Nexus approach.

RETOUCH Nexus aims to **investigate, advocate and enhance the implementation of the WEFE Nexus solutions in Europe** to promote innovative planning approaches across water-using sectors.

Stay informed Keep up with the latest on
RETOUCH NEXUS and register for the newsletter.



Sign up!



This project has received funding from the European
Union's Horizon Europe research and innovation
programme under grant agreement No. 101086522.

[Context](#) | [Privacy policy](#) | [Cookie policy](#) | [Legal Notice](#) | [Imprint](#)



Funded by the European Union. Views and opinions expressed are however those of the author(s) only and do not necessarily reflect those of the European Union or REA. Neither the European Union nor the granting authority can be held responsible for them.



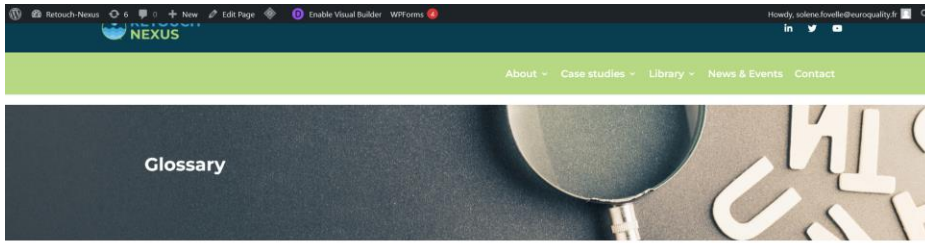
1.6. Glossary

A glossary of the main concepts and terms used has been drawn up and made available to enable the general public to gain a better understanding of the project, the issues involved and the solutions it aims to provide.



Funded by the European Union. Views and opinions expressed are however those of the author(s) only and do not necessarily reflect those of the European Union or REA. Neither the European Union nor the granting authority can be held responsible for them.





WEFE Nexus approach

WEFE Nexus approach
An approach that integrates management and governance across the multiple sectors of food, energy, water, and ecosystems

Water governance schemes and practices

The range of social, economic, political and administrative systems that are in place to develop and manage water resources, and the delivery of water services, at different levels of society and among different water-using sectors.

Institutional settings

Institutional settings
Defined collectively by: water law, water policy, and water administration constituting all the formal and informal arrangements within which the water sectors function.

Policy instruments

Policy instruments
Incentives designed and implemented with the purpose of adapting individual decisions to collectively agreed goals.

Engagement mechanisms

Engagement mechanisms
Mechanisms for public and stakeholder participation including action planning workshops, citizens' dialogues, consensus conferences, communities of practice and task forces

Economic framework/model

Economic framework/model
A set of economic tools that provides an overview of incentives and institutions and guides the economic decision-making process.

Pricing policies

Pricing policies
Methods that decision-making units use to set the price of a product or service based on costs, value, demand, and competition.

Financing & business model

Financing & business model
The summary of a decision-making unit's performance, based on benefits and costs, that provides an accurate forecast of future financial performance.

Cross-sectoral


Cross-sectoral
Involvement of multiple water-using sectors, including agriculture, energy, land use, environment and urbanisation.


Multi-level

Multi-level
Involvement of multiple scalars of hydrological systems and governance structures.

Multi-stakeholder

Multi-stakeholder
Bring together stakeholders, such as governments, civil society, and the private sector, who may have competing interests at times, to accomplish an objective.

Stay informed Keep up with the latest on RETOUCH NEXUS and register for the newsletter.  [Sign up!](#)

 This project has received funding from the European Union's Horizon Europe research and innovation programme under grant agreement No. 101096522.

[Context](#) | [Privacy policy](#) | [Cookie policy](#) | [Legal Notice](#) | [Imprint](#)



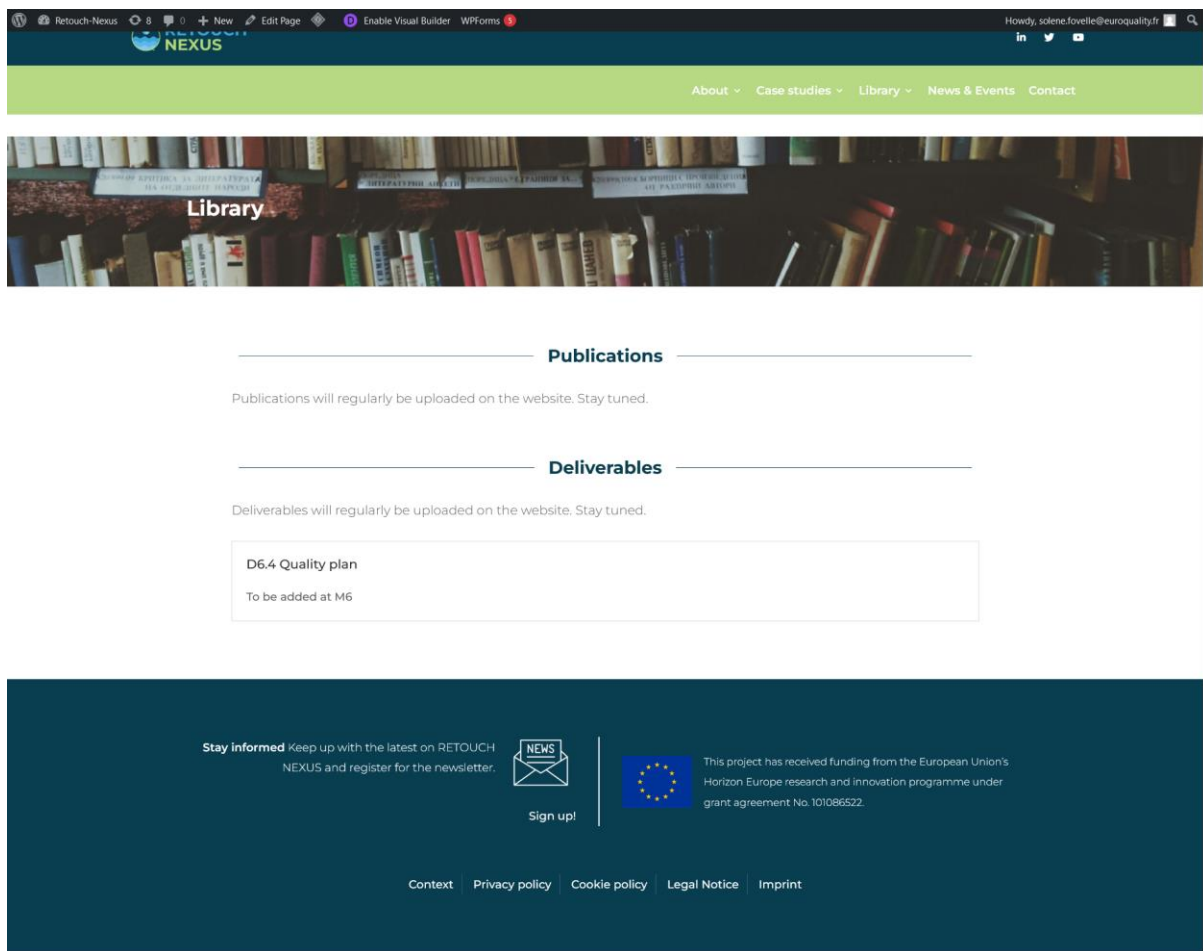
Funded by the European Union. Views and opinions expressed are however those of the author(s) only and do not necessarily reflect those of the European Union or REA. Neither the European Union nor the granting authority can be held responsible for them.



1.7. Library

The “Library” section will be the main channel for the Consortium to share reports and results with the general public. Still under development, the page will feature results by categories as presented in the project’s proposal, which include:

- Publications
- Deliverables (only public deliverables as defined in the Grant Agreement, once approved by the European Commission, will be made available)



1.8. News and events

The News & Events page is the core page for the project’s Communication and dissemination activities. It will feature:

- **Upcoming events:** where partners will have a dedicated space to be used to communicate on important events related to the project (publication of articles/press releases, participation to major events, organisation of communication events etc)



Funded by the European Union. Views and opinions expressed are however those of the author(s) only and do not necessarily reflect those of the European Union or REA. Neither the European Union nor the granting authority can be held responsible for them.

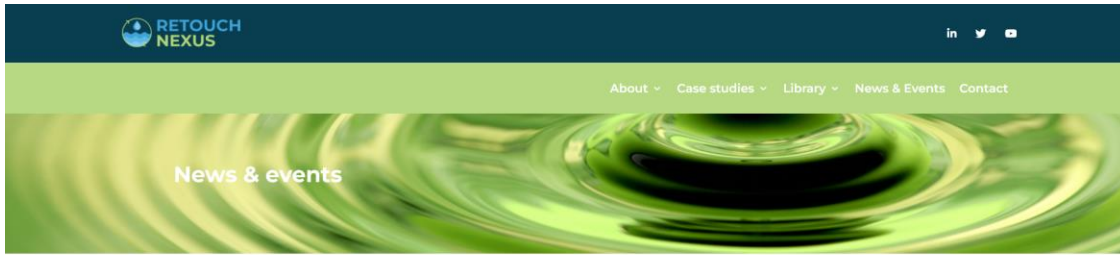


- **Social media:** this section is connected to the project's [LinkedIn](#) and [Twitter](#) accounts.
- **Press materials:** this section will feature official press material of the RETOUCH NEXUS project (*i.e.*, official logo, press releases, visuals, roll-up, flyer...).



Funded by the European Union. Views and opinions expressed are however those of the author(s) only and do not necessarily reflect those of the European Union or REA. Neither the European Union nor the granting authority can be held responsible for them.





Upcoming events

19 June 2023



Composed of InnWater, RetouchNexus and Govaqua, the synergy group WaterGovernance will be officially launched on the 19 June morning, on line.

- Full agenda: <https://bit.ly/3WZq0hg>
- Registration form: <https://bit.ly/3N2MLgl>

[+ Read More](#)

Social media

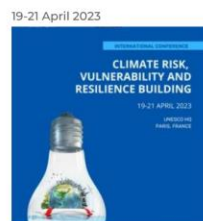


Past events



RETOUCH NEXUS is proud to attend the EGU23 organised by the European Geosciences...

[+ Read More](#)



Very proud to be part of the International Conference on Climate Risk, Vulnerability and...

[+ Read More](#)



The project was at the seminar on synergies and trade-offs between Water Energy Food...

[+ Read More](#)



The RETOUCH proud to celebrate Day 2023 aim

[+ Read More](#)



Stay informed Keep up with the latest on RETOUCH NEXUS and register for the newsletter.

[Sign up!](#)

This project has received funding from the European Union's Horizon Europe research and innovation programme under grant agreement No. 101086522.

[Context](#)

[Privacy policy](#)

[Cookie policy](#)

[Legal Notice](#)

[Imprint](#)



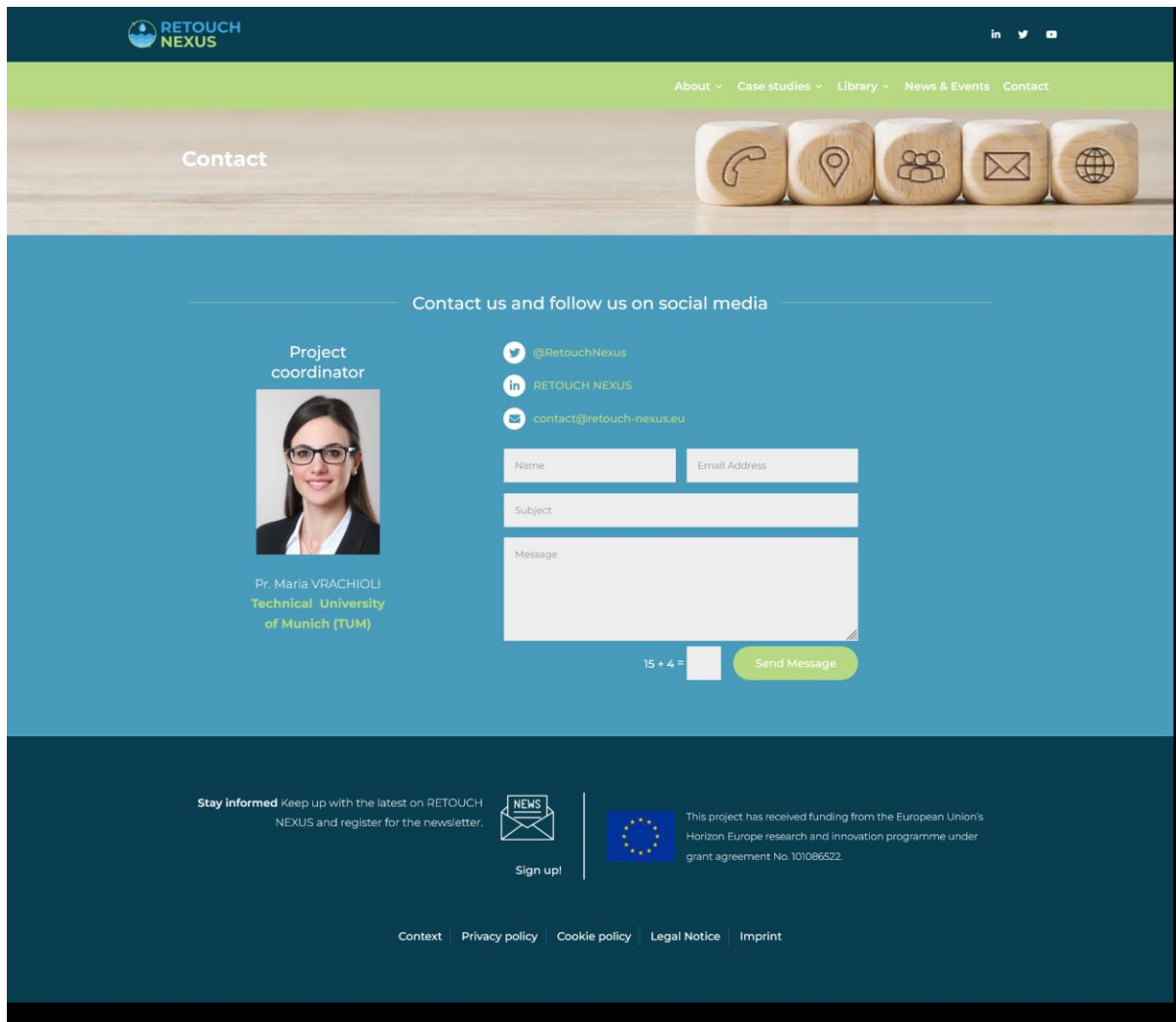
Funded by the European Union. Views and opinions expressed are however those of the author(s) only and do not necessarily reflect those of the European Union or REA. Neither the European Union nor the granting authority can be held responsible for them.



1.9. Contact us

The “Contact Us” button on the header menu, takes the user back to the Homepage bottom, where the links to the project’s social media accounts are features, and a “Contact us” for has been added to allow visitors to directly write to the project’s team.

The “Contact us” form is linked to the general e-mail address contact@retouch-nexus.eu, to which access can be provided by asking EQY to add specific contacts to the receiving mailing list.



2. Visual identity

2.1. Graphic charter

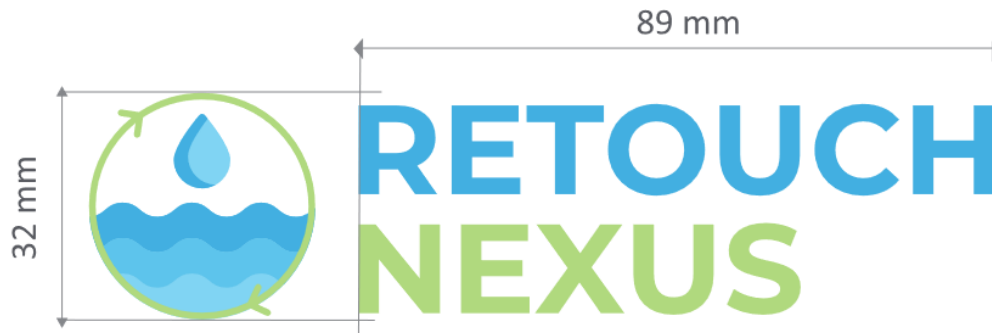


Funded by the European Union. Views and opinions expressed are however those of the author(s) only and do not necessarily reflect those of the European Union or REA. Neither the European Union nor the granting authority can be held responsible for them.



Logo

Construction for a font size 50 pt



Typography: Montserrat

Montserrat is a sans serif font with a good performance on screen. Its anatomy gives it a great personality and also makes it useful for reading on screen.

What if the logo needs to be smaller than 20px?

If the logo needs to be used in small format - under 20px - it remains in one line.



Funded by the European Union. Views and opinions expressed are however those of the author(s) only and do not necessarily reflect those of the European Union or REA. Neither the European Union nor the granting authority can be held responsible for them.



Protection zone



What you cannot do with this logo



Distortion



Rotation



Put the logo in a box



Change colors and font



Funded by the European Union. Views and opinions expressed are however those of the author(s) only and do not necessarily reflect those of the European Union or REA. Neither the European Union nor the granting authority can be held responsible for them.



Allowed variations

No color declinaison is allowed except for white logotype on logo's colors background.



Funded by the European Union. Views and opinions expressed are however those of the author(s) only and do not necessarily reflect those of the European Union or REA. Neither the European Union nor the granting authority can be held responsible for them.



Colors

Institutional palette

For Graphics, Design & typography . Similare shades are also accepted.



#83C9EF

R: 131
G: 201
B: 239C: 45%
M: 5%
Y: 0%
K: 0%

#40A5DC

R: 64
G: 165
B: 220C: 68
M: 20%
Y: 0%
K: 0%

#B3D67B

R: 179
G: 214
B: 123C: 33%
M: 0%
Y: 68%
K: 0%

Typography

Montserrat

Web Headings
logo

ABCDEFGHIJKLMNOPQRSTUVWXYZ

Calibri Regular

Headings
Text

ABCDEFGHIJKLMNOPQRSTUVWXYZ

Calibri Italic

Headings
Text

ABCDEFGHIJKLMNOPQRSTUVWXYZ

Calibri Bold

Headings
Text

ABCDEFGHIJKLMNOPQRSTUVWXYZ



2.2. Word template



Funded by the European Union. Views and opinions expressed are however those of the author(s) only and do not necessarily reflect those of the European Union or REA. Neither the European Union nor the granting authority can be held responsible for them.





REsilienT water gOvernance Under climate CHange
within the WEFE NEXUS

Deliverable DX.X

TITLE OF DELIVERABLE

Last name, first name (institution acronym), ...

Date (XX/XX/XXXX)



Funded by the European Union. Views and opinions expressed are however those of the author(s) only and do not necessarily reflect those of the European Union or REA. Neither the European Union nor the granting authority can be held responsible for them.



Funded by the European Union. Views and opinions expressed are however those of the author(s) only and do not necessarily reflect those of the European Union or REA. Neither the European Union nor the granting authority can be held responsible for them.



DX.X: TITLE OF DELIVERABLE

2

RETOUCH NEXUS Partners



Technical University of Munich - TUM (Germany) - Maria Vrachlioli, Johannes Sauer, Markus Disse, Juan Pablo Henao Henao, Jingshui Huang & Nicole Tatjana Scherer

Valencia Polytechnic University - UPV (Spain) - Manuel Pulido-Velazquez, Hector Macián Sorribes, Adria Rubio-Martin & Eulalia Gomez Martin

Vrije Universiteit Amsterdam - VUA (Netherlands) - Erik Ansink, Nicolien van der Grijp, Daniel Petrovics & Leon Bremer

adelphi research gemeinnutzige - adelphi (Germany) - Annika Krammer, Elsa Semmling, Karolina Heck & Binayak Das

Slovak University of Agriculture - SUA (Slovakia) - Jan Pokrivcak, Ema Lazorcakova & Miroslava Rajcaniova

Euroquality - EQY (France) - Barthélémy Maillard, Clémence Gracia & Solène Fovelle

Vlaamse Instelling voor Technologisch Onderzoek - VITO (Belgium) - Katrien Van Hooydonk, Lilian Tavernier, Steven Broekx & Wim Schiettecatte

De Watergroep - DWG (Belgium) - Pauline Ottoy, Charlotte Jacobs & Ian Montauban Van Swindere

Energy and Water Agency - EWA (Malta) - Manuel Sapiano, Nicholas Ellul, Nadine Vella, Aaron Cutajar, Nadia Gatt Gafa & Marco Graziani

Hoogheemraadschap, Hollands Noorderkwartier - HHNK (Netherlands) - Floor van Schie, Ronald Koolen & Marja Korting

Greening the Islands - GI (Italy) - Gianni Chianetta, Emilio Gabrielli, Francesco Luisa, Mattia Monaco, Andrea Morabito, Sabrina Pentecoste, Jean Karl Micallef-Grimaud, Graziana Salvati

Regierung Oberfranken - RegOh (associated) (Germany) - Andrea Kuenzl



Funded by the European Union. Views and opinions expressed are however those of the author(s) only and do not necessarily reflect those of the European Union or REA. Neither the European Union nor the granting authority can be held responsible for them.



Funded by the European Union. Views and opinions expressed are however those of the author(s) only and do not necessarily reflect those of the European Union or REA. Neither the European Union nor the granting authority can be held responsible for them.



DX.X: TITLE OF DELIVERABLE

3

Ministry of Agriculture and Rural Development - MARD (associated) (Slovakia) - Martin Kovac

DELIVERABLE X.X

Project Acronym	RETOUCH NEXUS
Project Title	Resilient water governance Under climate Change within the WEFE NEXUS
Project Coordinator	Maria Vracholi
Project Duration	01.01.2023 – 31.12.2026

Nature of the deliverable

R	Document, report (excluding the periodic and final reports)
DEM	Demonstrator, pilot, prototype, plan designs
DEC	Websites, patents apps & media actions, videos , etc.
OTHER	Software, technical diagram , etc.

Dissemination Level

PU	Public, fully open, on web
CO	Confidential, restricted under conditions set out in Model Grant Agreement
CI	Classified, information as referred to in Commission Decision 2001/844/EC

Deliverable No.	D#.#
Dissemination level ¹	
Work Package	WP # - WP Title
Task	T #.# - Task Title
Lead beneficiary	Partner number (partner short name)
Contributing beneficiary(ies)	Partner number (partner short name), partner number (partner short name)
Due date of deliverable	DD Month 202Y
Actual submission date	DD Month 202Y

Quality procedure

Date	Version	Reviews	Comments

Acknowledgements



Funded by the European Union. Views and opinions expressed are however those of the author(s) only and do not necessarily reflect those of the European Union or REA. Neither the European Union nor the granting authority can be held responsible for them.



Funded by the European Union. Views and opinions expressed are however those of the author(s) only and do not necessarily reflect those of the European Union or REA. Neither the European Union nor the granting authority can be held responsible for them.



DX.X: TITLE OF DELIVERABLE

4

This report is part of the deliverables from the project "RETOUCH NEXUS" which has received funding from the European Union's Horizon Europe research and innovation program under grant agreement N° 101086522. More information on the project can be found at www.retouch-nexus.eu

Executive summary

Text



Funded by the European Union. Views and opinions expressed are however those of the author(s) only and do not necessarily reflect those of the European Union or REA. Neither the European Union nor the granting authority can be held responsible for them.



Funded by the European Union. Views and opinions expressed are however those of the author(s) only and do not necessarily reflect those of the European Union or REA. Neither the European Union nor the granting authority can be held responsible for them.



DX.X: TITLE OF DELIVERABLE

5

Table of content

Contents

Executive summary	4
Abbreviations	6
List of Figures	7
List of Tables	7
1. My first section	7
1.1. My first sub-section	7
1.2. My second sub-section	7
2. My first sub-section	7
2.1. My first sub-section	7
2.2. My second sub-section	8
3. Conclusions	9
References	10



Funded by the European Union. Views and opinions expressed are however those of the author(s) only and do not necessarily reflect those of the European Union or REA. Neither the European Union nor the granting authority can be held responsible for them.



Funded by the European Union. Views and opinions expressed are however those of the author(s) only and do not necessarily reflect those of the European Union or REA. Neither the European Union nor the granting authority can be held responsible for them.



DX.X: TITLE OF DELIVERABLE 6

EC	European Commission
ES	Ecosystem Services
EU	European Union
XXX	XXX

Abbreviations



Funded by the European Union. Views and opinions expressed are however those of the author(s) only and do not necessarily reflect those of the European Union or REA. Neither the European Union nor the granting authority can be held responsible for them.



Funded by the European Union. Views and opinions expressed are however those of the author(s) only and do not necessarily reflect those of the European Union or REA. Neither the European Union nor the granting authority can be held responsible for them.



DX.X: TITLE OF DELIVERABLE 7

List of Figures

Figure 1. [Title]..... 5



Funded by the European Union. Views and opinions expressed are however those of the author(s) only and do not necessarily reflect those of the European Union or REA. Neither the European Union nor the granting authority can be held responsible for them.



Funded by the European Union. Views and opinions expressed are however those of the author(s) only and do not necessarily reflect those of the European Union or REA. Neither the European Union nor the granting authority can be held responsible for them.



DX.X: TITLE OF DELIVERABLE

9

1. My first section

1.1. My first sub-section

Lorem ipsum dolor sit amet, consectetur adipiscing elit. Vivamus odio felis, mollis at ligula nec, condimentum efficitur eros. Phasellus vulputate orci a arcu rhoncus mollis. Sed dapibus nisl sed risus consectetur, ac consequat magna molestie. Proin id metus sed dui semper sagittis. Quisque mattis nec diam sit amet lobortis. Sed tincidunt libero nec leo iaculis semper. Curabitur ipsum quam, vestibulum vitae ex dignissim, sollicitudin vulputate ligula.

Table 1 – Example of table

Origin	Country	TV channel	Program	Date of broadcasting (certain or presumed)
A	xxx	xxx	xxx	xxx
	xxx	xxx	xxx	xxx
	xxx	xxx	xxx	xxx
B	xxx	xxx	xxx	xxx
	xxx	xxx	xxx	xxx
	xxx	xxx	xxx	xxx

1.2. My second sub-section

2. My first sub-section

2.1. My first sub-section

Quisque at eros vehicula, imperdiet eros, at, elephasque cibus. Mauris vel elit end-tuam, hendrerit orci. Mauris fringilla, ante nibb, nec fringilla, ante aliquet consectetur. Vivamus sagittis lacus nec turpis varius. Eget sagittis turis varius. Nunc dui orci, tincidunt malesuada accumsan sed, vulputate ut turpis. Cras ut amet, tunc eget lacus molestie lobortis. Suspendisse potenti, Praesent at dui ut amet, dui cubana pellentes

Figure 1 – Example of graph



Funded by the European Union. Views and opinions expressed are however those of the author(s) only and do not necessarily reflect those of the European Union or REA. Neither the European Union nor the granting authority can be held responsible for them.



2.3. PPT template



Funded by the European Union. Views and opinions expressed are however those of the author(s) only and do not necessarily reflect those of the European Union or REA. Neither the European Union nor the granting authority can be held responsible for them.





RET TOUCH NEXUS

REsilienT water gOvernance Under climate
CHange within the WEFE NEXUS

Title



Date –Location

Presenter's name (organisation)
email address



Funded by the European Union. Views and opinions expressed are however those of the author(s) only and do not necessarily reflect those of the European Union or REA. Neither the European Union nor the granting authority can be held responsible for them.

• Add your text



Presenter's name (organisation)

2



Funded by the European Union. Views and opinions expressed are however those of the author(s) only and do not necessarily reflect those of the European Union or REA. Neither the European Union nor the granting authority can be held responsible for them.





Presenter's name (organisation)

7



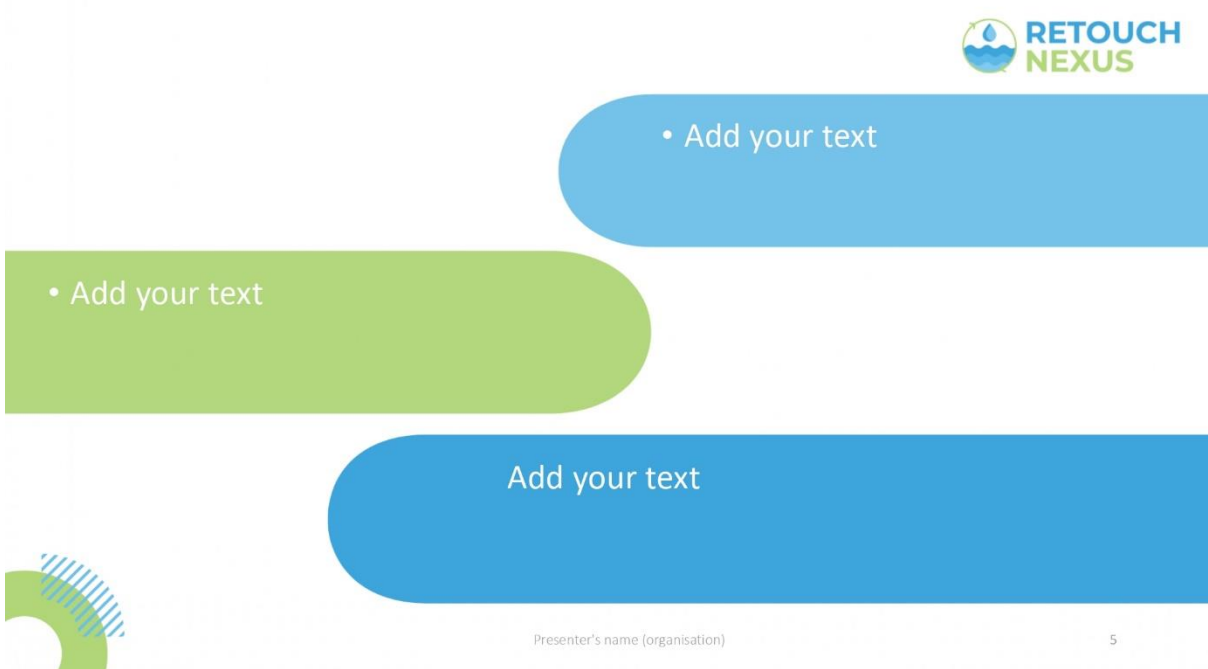
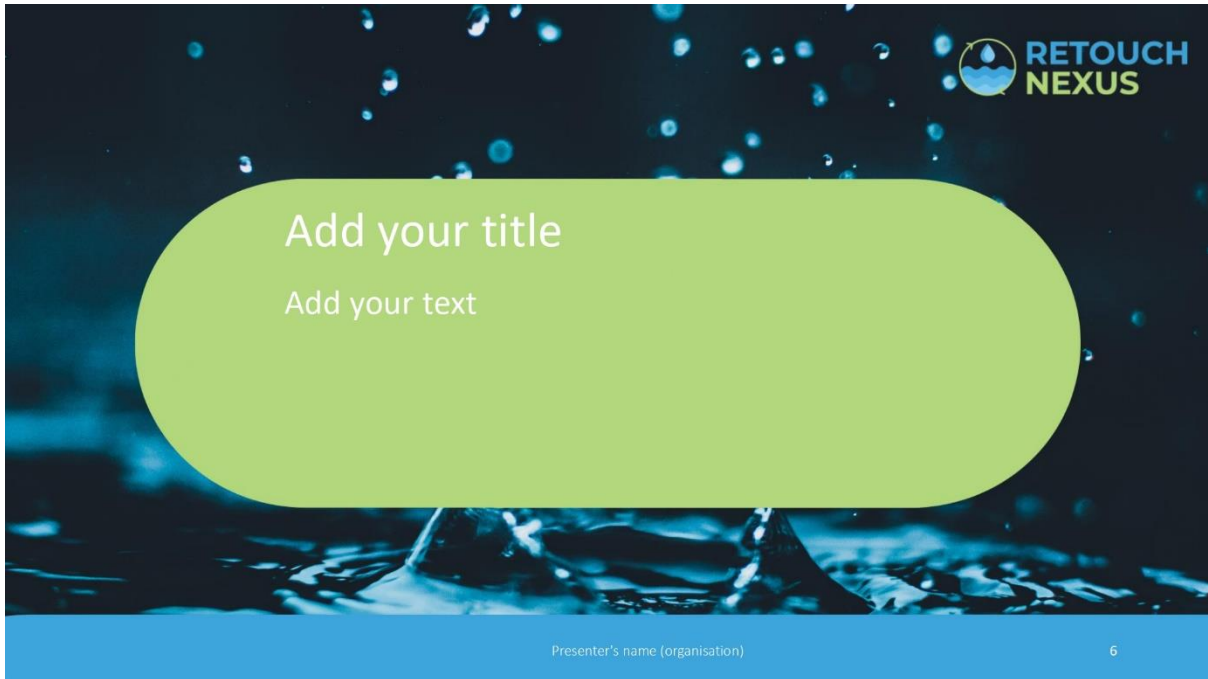
Presenter's name (organisation)
 email address
www.retouch-nexus.eu
 LinkedIn: @RETOUCH NEXUS HEU
 Twitter: @RETOUCH NEXUS HEU

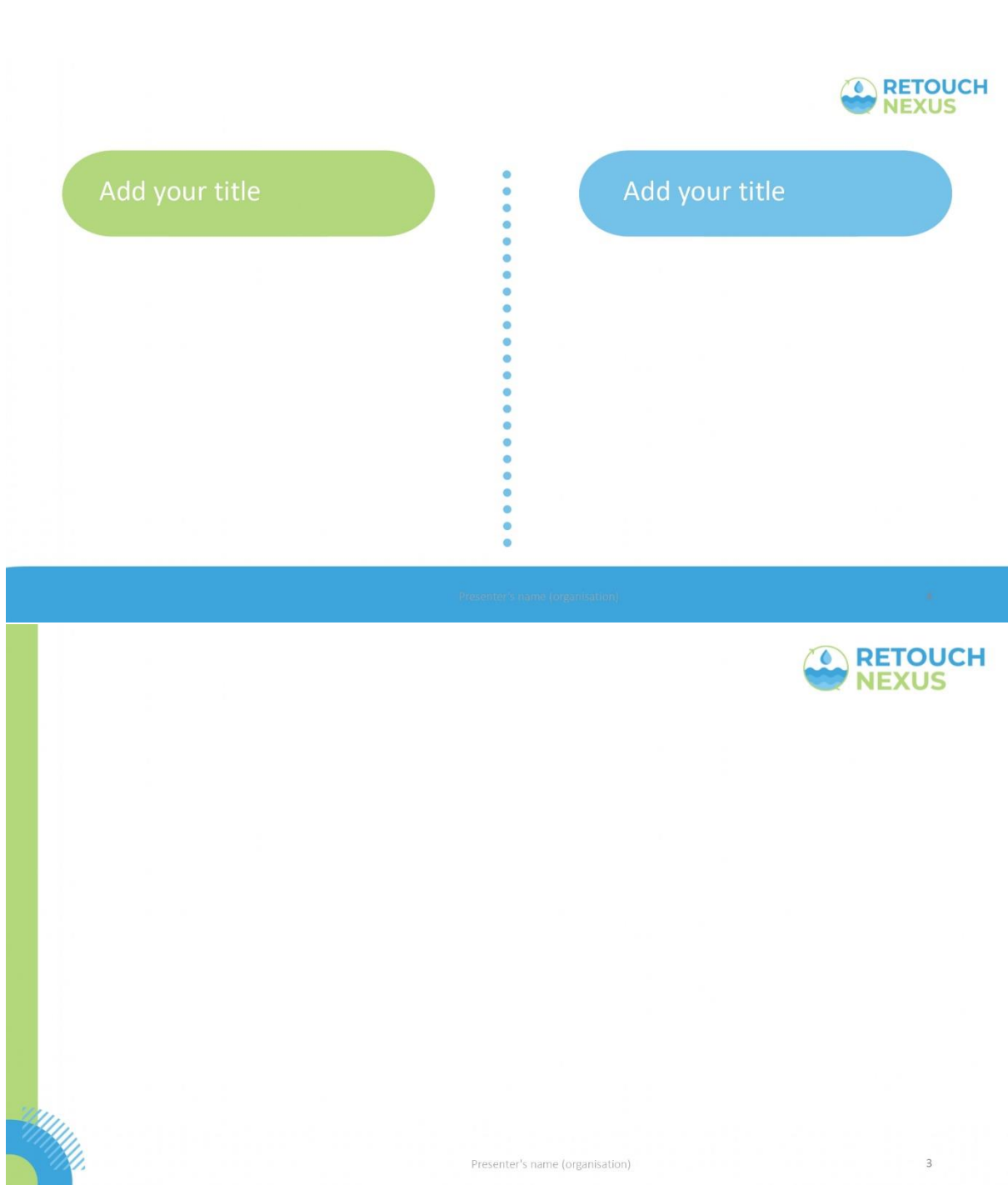
Technische Universität München  
 
 
 
 
 
 Regierung von Oberfranken 



Funded by the European Union. Views and opinions expressed are however those of the author(s) only and do not necessarily reflect those of the European Union or REA. Neither the European Union nor the granting authority can be held responsible for them.







2.4. Case studies poster template



Funded by the European Union. Views and opinions expressed are however those of the author(s) only and do not necessarily reflect those of the European Union or REA. Neither the European Union nor the granting authority can be held responsible for them.





**RESilient water gOvernance Under climate
CHange within the WEFE NEXUS:
XXX case study**



Partner organization

RETOUCH NEXUS

@RETOUCH NEXUS

www.retouch-nexus.eu

THE RETOUCH NEXUS PROJECT



CASE STUDY OVERVIEW

THE CASE STUDY IN A NUTSHELL

Text zone (Arial 32)

CONTEXT OF THE CASE STUDY

Text zone (Arial 32)



CONTRIBUTION

Text zone (Arial 32)

METHODOLOGY & EXPECTED RESULTS



LOCAL WATER GOVERNANCE SYSTEMS ANALYSIS

Text zone (Arial 32)

LOCAL INDICATORS USED FOR MONITORING WATER GOVERNANCE

Text zone (Arial 32)

STAKEHOLDER ENGAGEMENT & PUBLIC PARTICIPATION ANALYSIS

Text zone (Arial 32)

References:

This project has received funding from the European Union's Horizon Europe research and innovation programme under grant agreement No. 101086522.



Funded by the European Union. Views and opinions expressed are however those of the author(s) only and do not necessarily reflect those of the European Union or REA. Neither the European Union nor the granting authority can be held responsible for them.



Conclusion

With its unique visual identity and website, RETOUCH NEXUS will reach a wide audience, introducing a new way of organising and planning water management.



Funded by the European Union. Views and opinions expressed are however those of the author(s) only and do not necessarily reflect those of the European Union or REA. Neither the European Union nor the granting authority can be held responsible for them.

